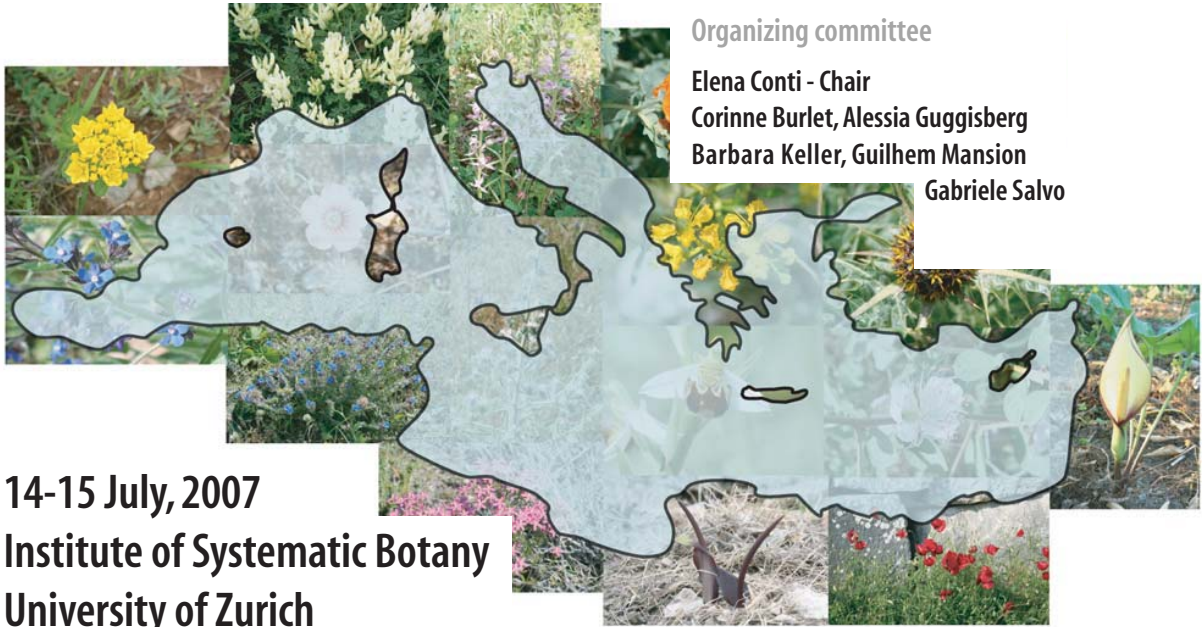


Origin and Evolution of Biota in Mediterranean Climate Zones

an Integrative Vision



Organizing committee

Elena Conti - Chair

Corinne Burret, Alessia Guggisberg

Barbara Keller, Guilhem Mansion

Gabriele Salvo

14-15 July, 2007

Institute of Systematic Botany

University of Zurich

Sponsors



FONDS NATIONAL SUISSE
SCHWEIZERISCHER NATIONALFONDS
FONDO NAZIONALE SVIZZERO
SWISS NATIONAL SCIENCE FOUNDATION



DIVERSITAS
an international programme
of biodiversity science



Institute of Systematic Botany
Dean of Science Office
University of Zurich

P24. NATURALISED ALIEN PLANT TAXA OF GREECE: ORIGIN AND HABITAT

Kokkoris, Y., Bazos, I. & Arianoutsou, M.

Department of Ecology and Systematics, Faculty of Biology, University of Athens, 15784 Athens.

Greece

Correspondence: marianou@biol.uoa.gr

Greece is a Mediterranean country hosting a high number of plant taxa (approx. 6.500 species and subspecies) and is influenced by human activity for millennia. A survey of the alien plants of the country was undertaken as part of a European project aiming at Delivering an Alien Species Inventory for Europe (DAISIE). For this purpose, a thorough investigation of the existing literature was made. Information derived was compiled in a database with all the alien plants. The data collected concern taxonomy, status, life and growth form, habitat, origin, distribution etc. The current contribution reports on the naturalized alien plant taxa only (198 out of 325 alien taxa). The majority of them belong to the families of Gramineae, Amaranthaceae, Compositae and Leguminosae. Their origin is mainly South or North American, Southwestern European or African but a large number of them are of indeterminate origin. The habitats which usually host these plants are either disturbed or man-made, such as cultivations, road sides, fallow lands and waste deposits. It is notable that only a limited number of alien plants intrude natural habitats. The latter is an evidence of the resistance of the Mediterranean environments to the introduction of new plant taxa.